



SRK25ZS-WF / SRC25ZS-W2

2.5(0.9~3.1)

Indoor Unit : SRK25ZS-WF

Outdoor Unit : SRC25ZS-W2

Specifications

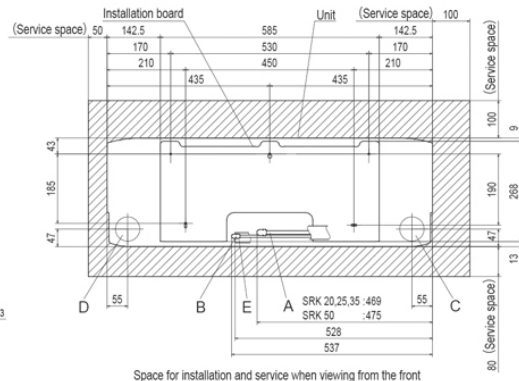
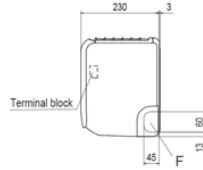
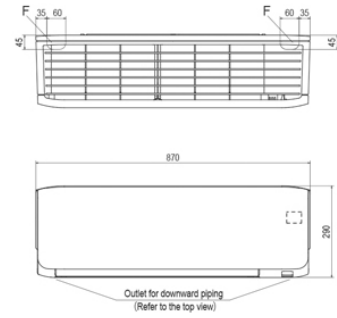
R32

Indoor unit		SRK25ZS-WF	
Outdoor unit		SRC25ZS-W2	
Power source		1Phase, 220 - 240, 50Hz	
Nominal cooling capacity (Min~Max)		kW	2.5(0.9~3.1)
Nominal heating capacity (Min~Max)		kW	3.2(0.9~4.5)
Power consumption	Cooling/Heating	kW	0.62 / 0.74
EER/COP	Cooling/Heating		4.03 / 4.32
Max. running current		A	9
Sound power level	Indoor	Cooling/Heating	50 / 53
	Outdoor	Cooling/Heating	56 / 58
Sound pressure level	Indoor	Cooling (Hi/Me/Lo/Ulo)	36 / 28 / 23 / 19
		Heating (Hi/Me/Lo/Ulo)	39 / 30 / 24 / 19
	Outdoor	Cooling/Heating	46 / 46
Air flow	Indoor	Cooling (Hi/Me/Lo/Ulo)	9.9 / 8.0 / 5.9 / 5.0
		Heating (Hi/Me/Lo/Ulo)	11.3 / 8.7 / 6.7 / 5.9
	Outdoor	Cooling/Heating	27.4 / 23.6
Exterior Dimensions	Indoor	Height x Width x Depth	290 x 870 x 230
	Outdoor		540 x 780(+62) x 290
Net weight	Indoor / Outdoor	kg	9.5 / 31.0
Refrigerant	Type/GWP		R32 / 675
Refrigerant	Charge	kg/TCO2Eq	0.62 / 0.419
Refrigerant piping size	Liquid/Gas	mm (ø inch)	6.35(1/4") / 9.52(3/8")
Refrigerant line (one way) length		m	Max. 20
Vertical height differences	Outdoor is higher/lower	m	Max. 10 / Max. 10
Outdoor operating temperature range	Cooling	°C	-15~46
	Heating		-15~24
Clean filter		Allergen Clear Filter x 1, Photocatalytic Washable Deodorizing Filter x 1	
Energy Class (Cooling/Heating)		A+++ / A++	
SEER		8.50	
SCOP (Average climate)		4.70	
Pdesign (cooling/heating(@-10°C))		kW	2.50/2.70
Annual Electricity Consumption (cooling/heating)		kWh/a	103/804
Designated Heating Season		Average	

- The data is measured under the following conditions(ISO-T1, H1). Cooling: Indoor temp. of 27°CDB, 19°CWB, and outdoor temp. of 35°CDB. Heating: Indoor temp. of 20°CDB, and outdoor temp. of 7°CDB, 6°CWB.
- Sound level indicates the value in an anechoic chamber. During operation these values are somewhat higher due to ambient conditions.
- 'tonne(s) of CO2 equivalent' means a quantity of greenhouse gases- expressed as the product of the weight of the greenhouse gases in metric tonnes and of their global warming potential.
- SEER/SCOP are based on EN14825:2016 and Commission regulation (EU) No.2016/2281

Schematics

SRK20ZS-WF, -WFB, -WFT, -W
 SRK25ZS-WF, -WFB, -WFT, -W
 SRK35ZS-WF, -WFB, -WFT, -W
 SRK50ZS-WF, -WFB, -WFT, -W
 SRK20ZS-S, -SB, -ST SRK25ZS-S, -SB, -ST
 SRK35ZS-S, -SB, -ST SRK50ZS-S, -SB, -ST

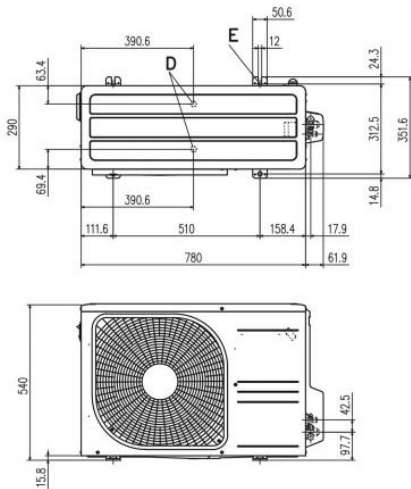


Space for installation and service when viewing from the front

Symbol	Content
A	Gas piping SRK20, 25, 35 ϕ 9.52 (3/8") (Flare) SRK50 ϕ 12.7 (1/2") (Flare)
B	Liquid piping SRK20, 25, 35 ϕ 6.35 (1/4") (Flare)
C	Hole on wall for right rear piping (ϕ 65)
D	Hole on wall for left rear piping (ϕ 65)
E	Drain hose VP16
F	Outlet for piping (on both side)

Outdoor units

SRC20ZS-W, 25ZS-W, 35ZS-W
 SRC25ZS-W1, 35ZS-W1
 SRC25ZS-W2, 35ZS-W2



Symbol	Content
A	Service valve connection (gas side) ϕ 9.52 (3/8") (Flare)
B	Service valve connection (liquid side) ϕ 6.35 (1/4") (Flare)
C	Pipe/cable draw-out hole
D	Drain discharge hole ϕ 20x2places
E	Anchor bolt hole M10x4places

Dimensions	Minimum installation space			
	Examples of installation			
L1	Open	280	280	180
L2	100	75	Open	Open
L3	100	80	80	80
L4	250	Open	250	Open

