



## FDUM140VSAVH

13.6 ( 5.0 ~ 14.5 )

Indoor Unit : FDUM140VH

Outdoor Unit : FDC140VSA

### Specifications



Indoor unit			FDUM140VH
Outdoor unit			FDC140VSA
Power source			3 Phase 380-415V, 50Hz / 380V, 60Hz
Nominal cooling capacity (Min~Max)		kW	13.6 ( 5.0 ~ 14.5 )
Nominal heating capacity (Min~Max)		kW	15.5 ( 4.0 ~ 16.5 )
Power consumption	Cooling/Heating	kW	4.93 / 4.21
EER/COP	Cooling/Heating		2.76 / 3.68
Inrush current		A	5
Max. running current		A	18
Sound power level* <sup>1</sup>	Indoor * <sup>3</sup>	Cooling/Heating	70 / 70
	Outdoor	Cooling/Heating	73 / 73
Sound pressure level* <sup>1</sup>	Indoor * <sup>3</sup>	Cooling (Hi/Me/Lo/Ulo)	47 / 40 / 35 / 30
		Heating (Hi/Me/Lo/Ulo)	47 / 40 / 35 / 30
	Outdoor	Cooling/Heating	57 / 59
Air flow	Indoor * <sup>3</sup>	Cooling (Hi/Me/Lo/Ulo)	48 / 35 / 28 / 22
		Heating (Hi/Me/Lo/Ulo)	48 / 35 / 28 / 22
	Outdoor	Cooling/Heating	75 / 73
Available external static pressure		Pa	Standard:60 Max:100
Exterior Dimensions	Indoor	Height x Width x Depth	mm
	Outdoor		
Net weight	Indoor / Outdoor		kg
Refrigerant	Type/GWP		R410A/2088
Refrigerant piping size	Liquid/Gas	mm (ø inch)	9.52(3/8") / 15.88(5/8")
Refrigerant line (one way) length		m	Max.50
Vertical height differences	Outdoor is higher/lower	m	Max.50 / Max.15
Outdoor operating temperature range	Cooling* <sup>2</sup>	°C	-15~50
	Heating		-20~20
Air filter quantity			(Option) Filter kit : UM-FL3EF
Remote control (option)			wired:RC-EX3A, RC-E5, RCH-E3 wireless:RCN-KIT4-E2
SEER			5.08
SCOP (Average climate)			4.01

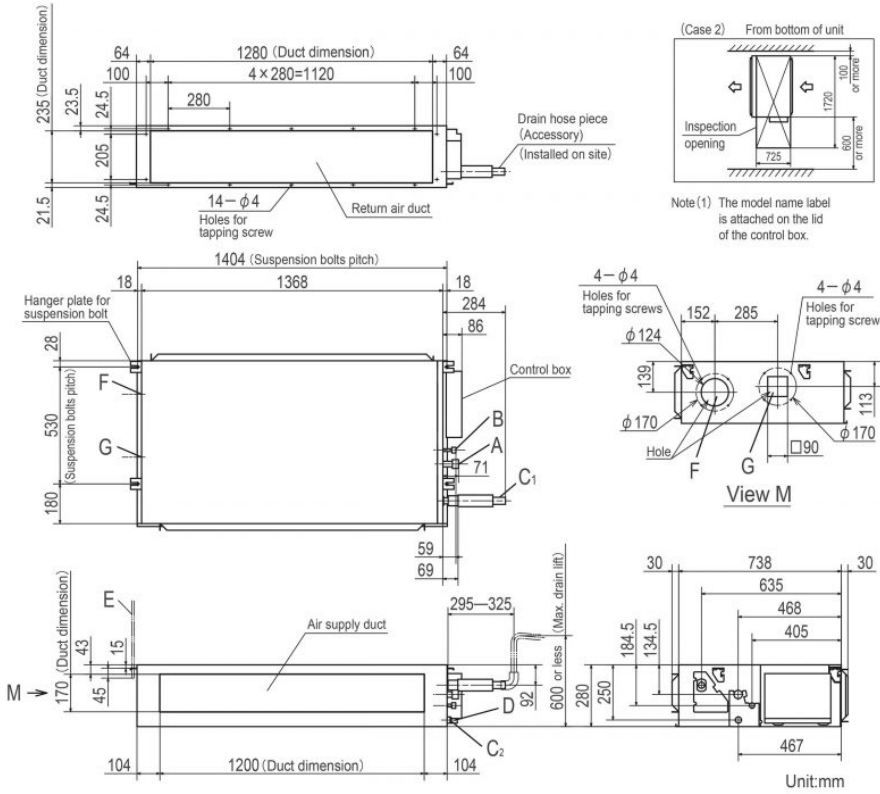
The data is measured under the following conditions (R32 : ISO-T1, -H1 / , R410A : ISO-T1).

Cooling: Indoor temp. of 27°CDB, 19°CWB, and outdoor temp. of 35°CDB. Heating: Indoor temp. of 20°CDB, and outdoor temp. of 7°CDB, 6°CWB.

- : Indicates the value in an anechoic chamber. During operation these values are somewhat higher due to ambient conditions.
- : External static pressure is changeable to be set by the remote control. MAX external static pressure is "High static pressure" setting. The values of sound pressure level become 5dB(A) higher at external static pressure of 200Pa
- : If a cooling operation is conducted when the outdoor air temperature is -5°C or lower, the outdoor unit should be installed at a place where it is not influenced by natural wind. If wind blows, the low pressure will drop and compressor frequency will increase, this will cause the capacity to drop and may cause the unit to break down.
- : The values are for one indoor unit operation. (Multi system only)

# Schematics

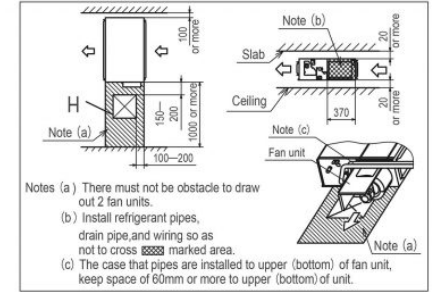
## Models FDUM100VH,125VH,140VH



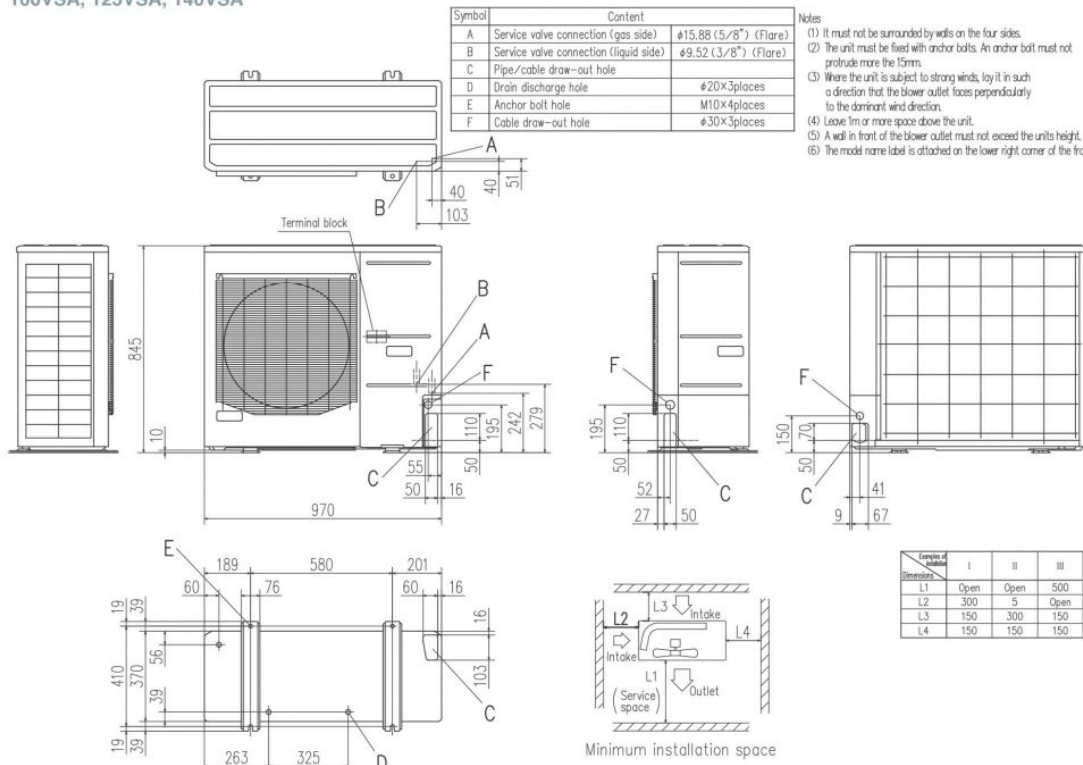
Symbol	Content
A	Gas piping $\phi 15.88 (5/8")$ (Flare)
B	Liquid piping $\phi 9.52 (3/8")$ (Flare)
C	Drain piping VP25 (O.D.32)
C <sub>1</sub>	Drain piping (Gravity drainage) VP20
D	Hole for wiring
E	Suspension bolts (M10)
F	Outside air opening for ducting ( $\phi 150$ ) (Knock out)
G	Air outlet opening for ducting ( $\phi 125$ ) (Knock out)
H	Inspection opening (450×450)

**Space for installation and service**

Select either of two cases to keep space for installation and services.  
(Case 1) From side of unit



## FDC100VNA, 125VNA, 140VNA 100VSA, 125VSA, 140VSA



Symbol	Content
A	Service valve connection (gas side) $\phi 15.88 (5/8")$ (Flare)
B	Service valve connection (liquid side) $\phi 9.52 (3/8")$ (Flare)
C	Pipe/cable draw-out hole
D	Drain discharge hole $\phi 20 \times 3$ places
E	Anchor bolt hole M10 $\times 4$ places
F	Cable draw-out hole $\phi 30 \times 3$ places

- Notes
- (1) It must not be surrounded by walls on the four sides.
  - (2) The unit must be fixed with anchor bolts. An anchor bolt must not protrude more than 15mm.
  - (3) Where the unit is subject to strong winds, lay it in such a direction that the blower outlet faces perpendicularly to the dominant wind direction.
  - (4) Leave 1m or more space above the unit.
  - (5) A wall in front of the blower outlet must not exceed the units height.
  - (6) The model name label is attached on the lower right corner of the front panel.

Dimension	I	II	III
L1	Open	Open	500
L2	300	5	Open
L3	150	300	150
L4	150	150	150