



FDU250VSAVG

24.0 (6.9 ~ 28.0)

Indoor Unit : FDU250VG

Outdoor Unit : FDC250VSA

Specifications



Indoor unit			FDU250VG
Outdoor unit			FDC250VSA
Power source			3 Phase 380-415V, 50Hz / 380V, 60Hz
Nominal cooling capacity (Min~Max)		kW	24.0 (6.9 ~ 28.0)
Nominal heating capacity (Min~Max)		kW	27.0 (5.5 ~ 31.5)
Power consumption	Cooling/Heating	kW	7.98 / 7.20
EER/COP	Cooling/Heating		3.01 / 3.75
Inrush current		A	5
Max. running current		A	27
Sound power level*1	Indoor *3	Cooling/Heating	75 / 75
	Outdoor	Cooling/Heating	73 / 75
Sound pressure level*1	Indoor *3	Cooling (Hi/Me/Lo/Ulo)	52 / 50 / 47 / 45
		Heating (Hi/Me/Lo/Ulo)	52 / 50 / 47 / 45
	Outdoor	Cooling/Heating	59 / 62
Air flow	Indoor *3	Cooling (Hi/Me/Lo/Ulo)	80 / 72 / 64 / 56
		Heating (Hi/Me/Lo/Ulo)	80 / 72 / 64 / 56
	Outdoor	Cooling/Heating	143 / 151
Available external static pressure		Pa	Standard:72 Max:200
Exterior Dimensions	Indoor	Height x Width x Depth	mm
	Outdoor		
Net weight	Indoor / Outdoor	kg	89 / 143
Refrigerant	Type/GWP		R410A/2088
Refrigerant piping size	Liquid/Gas	mm (ø inch)	12.7(1/2") / 25.4(1")
Refrigerant line (one way) length		m	Max.70
Vertical height differences	Outdoor is higher/lower	m	Max.30 / Max.15
Outdoor operating temperature range	Cooling*2	°C	-15~50
	Heating		-15~20
Air filter quantity			Procure locally
Remote control (option)			wired:RC-EX3A, RC-E5, RCH-E3 wireless:RCN-KIT4-E2
SEER			4.82
SCOP (Average climate)			3.51

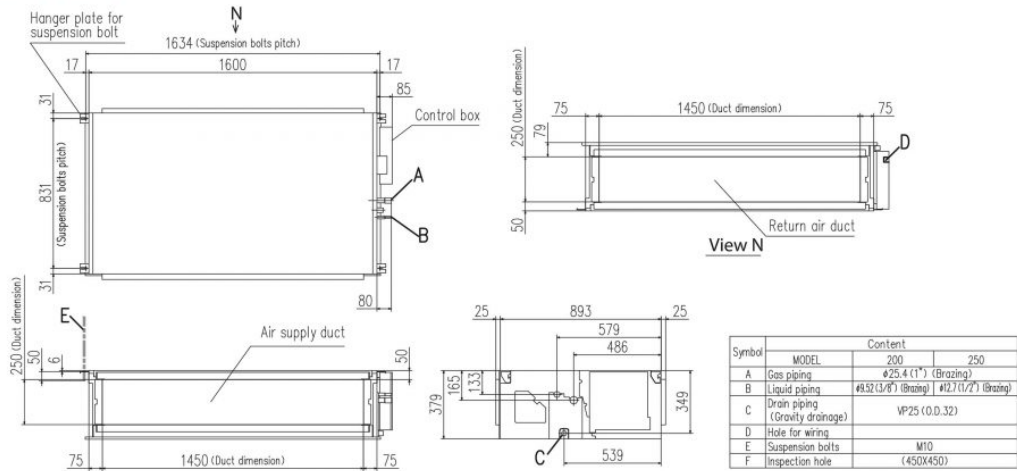
The data is measured under the following conditions (R32 : ISO-T1, -H1 /, R410A : ISO-T1).

Cooling: Indoor temp. of 27°CDB, 19°CWB, and outdoor temp. of 35°CDB. Heating: Indoor temp. of 20°CDB, and outdoor temp. of 7°CDB, 6°CWB.

- : Indicates the value in an anechoic chamber. During operation these values are somewhat higher due to ambient conditions.
- : External static pressure is changeable to be set by the remote control. MAX external static pressure is "High static pressure" setting. The values of sound pressure level become 5dB(A) higher at external static pressure of 200Pa
- : If a cooling operation is conducted when the outdoor air temperature is -5°C or lower, the outdoor unit should be installed at a place where it is not influenced by natural wind. If wind blows, the low pressure will drop and compressor frequency will increase, this will cause the capacity to drop and may cause the unit to break down.

Schematics

Models FDU200VG, 250VG



FDC250VSA

